

# Installation instruction do88 performance air filter housing Volvo V70 2.5FT 2008-2016

Part number: LF-1330-V70

This instruction shows how to replace the OEM turbo intake pipe with do88 performance intake pipe.

At this type of installation we always recommend that you have mechanical experience and knowledge about safety during work on vehicles.

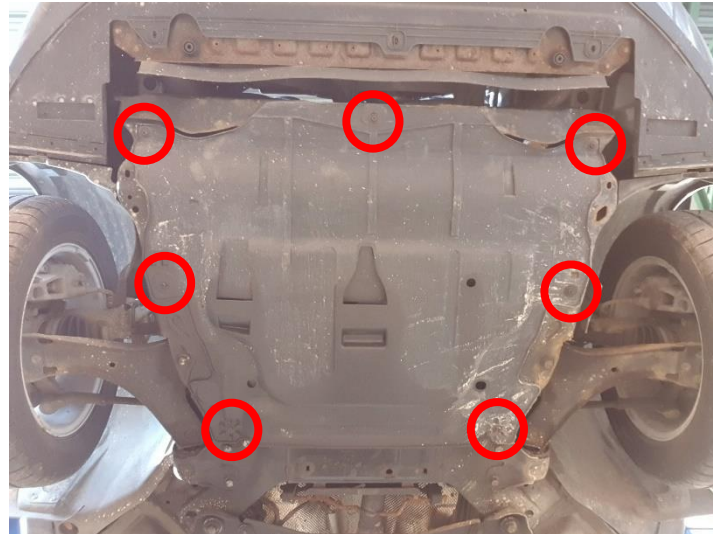
#### Parts included:

1. Upper half of the air filter housing
2. Lower half of the air filter housing
3. Bracket for the air filter housing
4. Bracket for the air filter housing
5. Bracket for the ECU
6. Performance foam air filter, pre oiled, washable.
7. 2 ¼" (57mm) Air ducting (1m)
8. 3" (76mm) Air ducting (1m)
9. Wire hose clamps (2pcs)
10. MAF gasket
11. Zip-ties (2pcs)
12. M5x20 black screws (2pcs)
13. M5x25 black screws (3pcs)
14. M5x30 black screws (5pcs)
15. M5 black nuts (10pcs)
16. M5x20 clear plated screws (4pcs, not in picture)
17. M5 clear plated flange nuts (4pcs, not in picture)
18. Rubber wear protection (10cm, not in picture)



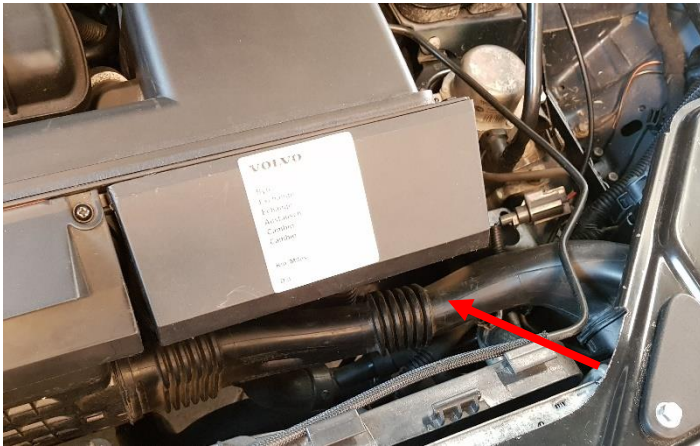
1. Disconnect the battery.

2. Remove the plastic cover underneath the engine  
7pcs Hex 10mm Screws.



3. Remove the air filter housing inlet pipe.

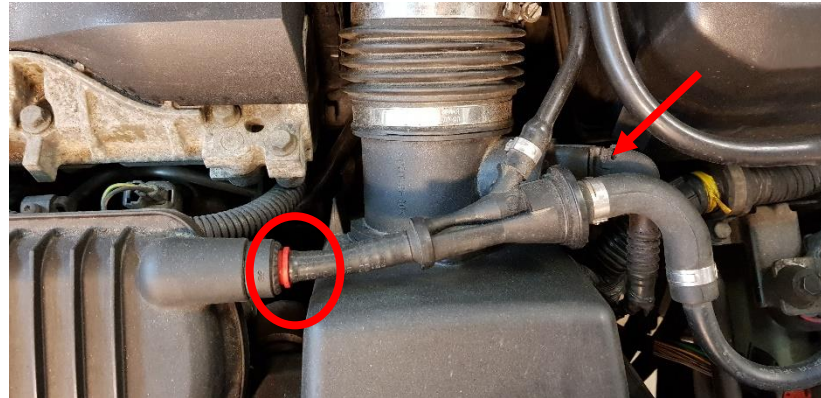
4. Remove the plastic ECU lid. Pull it straight up.



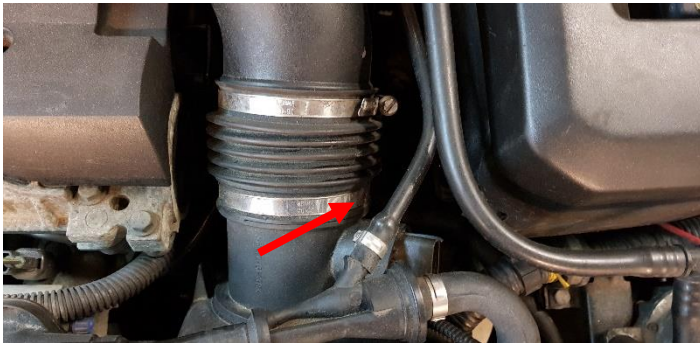
5. Gently disconnect the both ECU cable connectors. Press the black plastic tab and pull the red lever backwards.



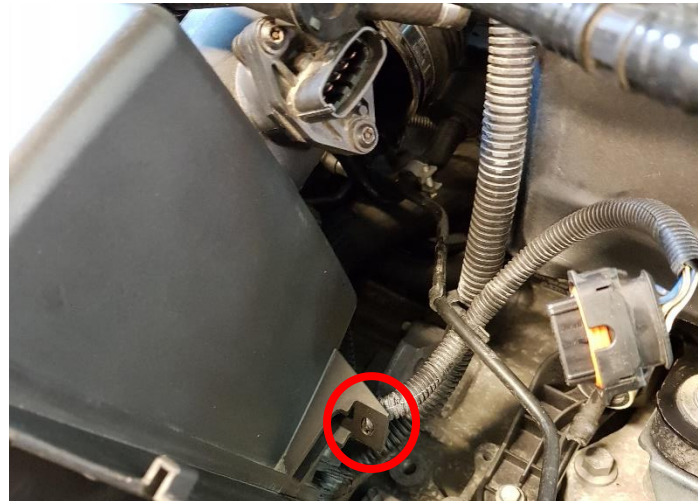
6. Disconnect the vacuum line from the intake manifold. Press the red plastic ring inwards and pull out the hose. Also disconnect the MAF cable connector.



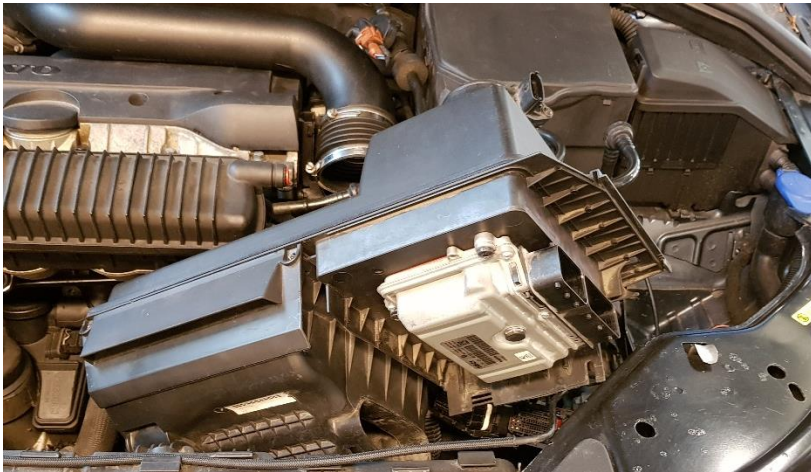
7. Loosen the MAF hose clamp and pull of the hose from its connection.



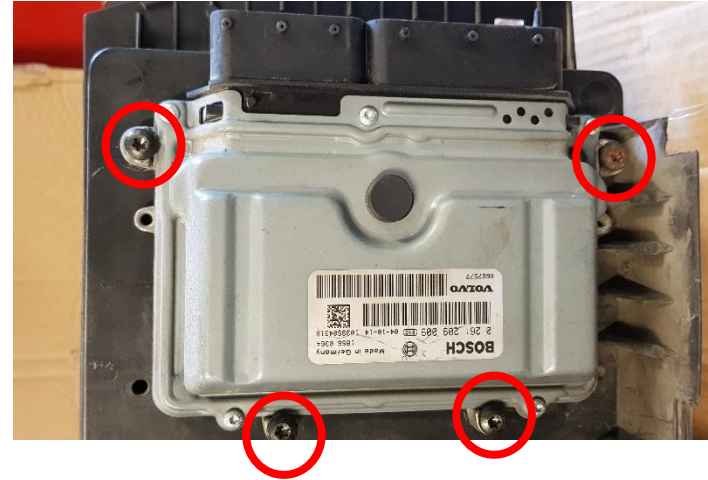
8. Disconnect the cable plastic clip.



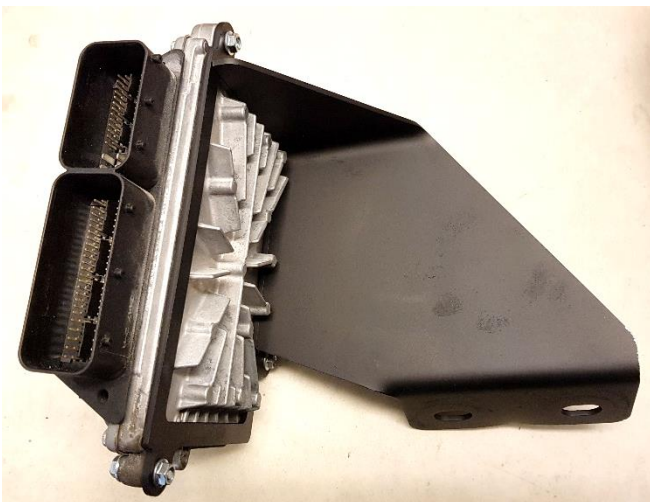
9. Lift the air filter housing out from its four rubber grommets and slide out from the engine bay as on the photo below.



10. Remove the ECU and MAF from the air filter housing. ECU has 4x Torx T30 and the MAF has 2x Torx T25 screws.



11. Fasten the ECU to the included bracket as on the photo below. Use the included 4x M5X20 screws and 4xM5 Nuts.



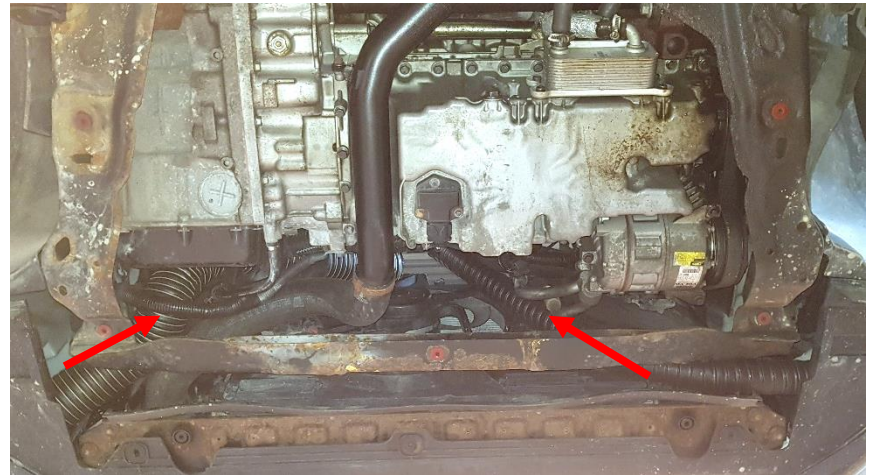
12. Remove 2x Hex 18mm nuts for the left side engine bracket.



- 13.** Install the ECU-bracket and fasten it with the nuts removed in step 12. Don't tighten the nuts, the bracket position may need to be adjusted. Install rubber wear protection according to picture. Reconnect the ECU cable connectors.



- 14.** Route the included air ducting hoses as on the photo. The 3" (76mm) on the left side and the 2 1/4" (57mm) hose on the right side.



- 15.** Fasten the left side air ducting with the included Zip-ties in the lower radiator support beam. The hose should be facing the windshield washer reservoir tank. Make sure that you have at least 76mm distance in-between the tank and the hose inlet.



- 16.** Fasten the right-side air ducting with the included Zip-ties in the lower radiator support beam. Make sure that you have at least 76mm distance in-between the plastic and the hose inlet.



17. Re-install the plastic cover underneath the engine removed in step 2.

18. Now it is time to assemble the do88 air filter housing.

1. Put the air filter into the bottom part of the air filter housing according to the photo. If the filter have excessive oil on it, carefully dab the filter with a soft cloth until the excess is removed.
2. Put the top and bottom halves of the air box to each other in the direction shown on the photo.
3. Fasten the air filter housing halves and the two brackets as shown on the photo. Use the included M5x25 screws and M5 nuts where it is no bracket and the M5x30 screws and M5 nuts where bracket is located. **Tighten the screws gently, if you overtight them you will damage the plastic housing and void warranty.** The whole screw flange surfaces on the top/bottom halves of the air box must stay flat/parallel against each other.
4. Install the MAF sensor as on the photo with the included gasket and M5x20 screws and M5 nuts (first remove the OEM gasket from the MAF sensor).
5. Fasten the 3" (76mm) and 2 1/4 " (57mm) air ducting hoses with the included hose clamps onto their connections on the air filter housing.

18.1



18.2



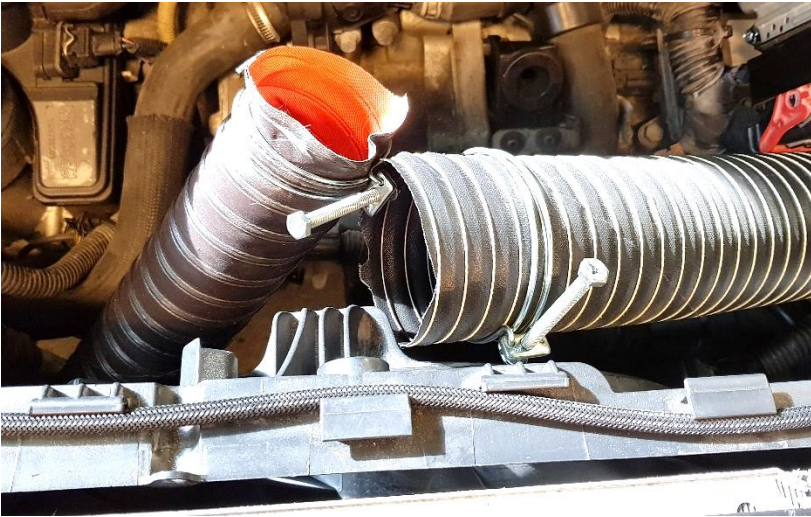
18.3



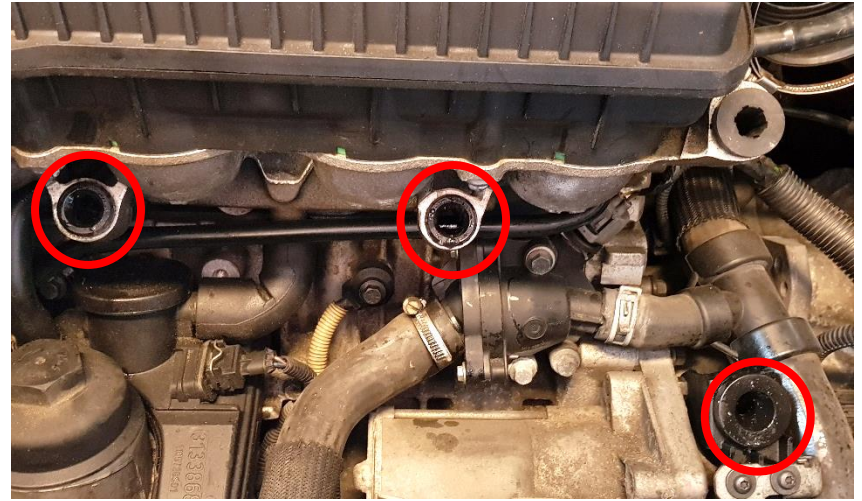
18.4



19. Put the included wire hose clamps on the air ducting hoses as shown on the photo.



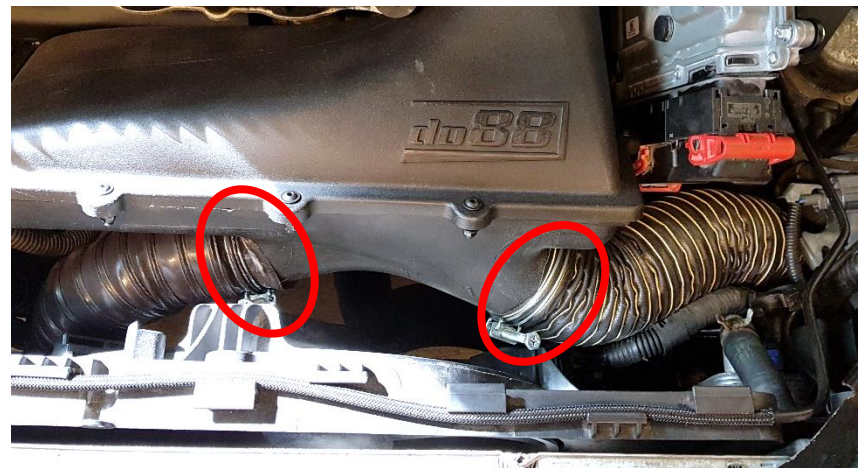
20. Lubricate the three rubber bushings shown on the photo with WD-40 for example.



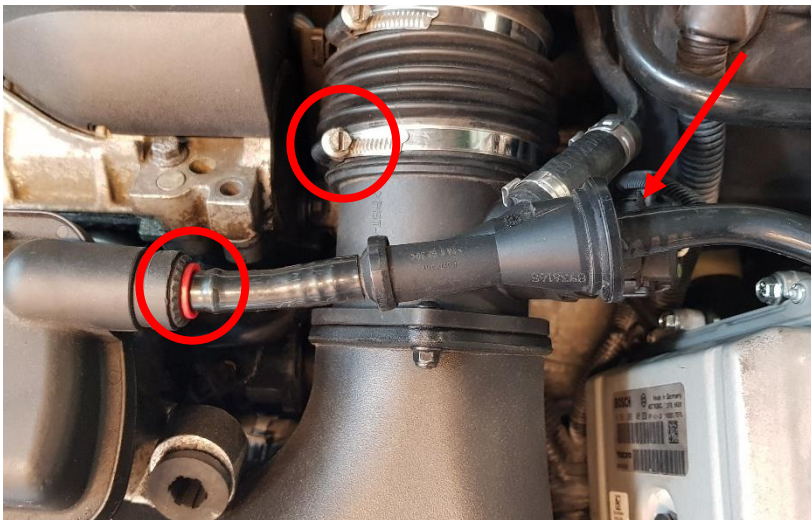
21. Now install the do88 air filter housing.



22. Fasten the two air ducting hoses to the air filter housing. Turn the hose clamps so the screws won't be visible (it looks better that way).



**23.** Reconnect the vacuum line, MAF cable connector and retighten the MAF hose clamp.



**24.** Adjust the ECU bracket so you have clearance between the air filter housing and the ECU. Then tighten the 2x 18mm Hex nuts for the engine mount.



**25.** Reconnect the battery and you are now finished.

**26.** Maintenance information.

The air filter in this kit have to be cleaned and reoiled when needed. The period for maintenance varies a lot in different driving conditions but minimum maintenance is according to vehicle schedule.

When doing maintenance, use Pipercross cleaning kit C9005 and follow the instructions for that kit.

**If you use other cleaning product you will void warranty.**